

Pima County Sheriff's Department  
Sobriety Checkpoint



180224001

Aviation Rd./Richey Blvd.



Sobriety Checkpoint Statistic Form

Date: Saturday, February 24, 2018

Location of Checkpoint: Aviation Rd./Richey Blvd.

Start Time 2113 End Time 2320

Number of Deputies 12 deputies / 2 DPS Troopers

Number of Supervisors 2

Vehicles Stopped 1008

DUI Investigations 15

Number of DUI arrests 6

Other arrests (specify) 5 3-C181  
2-18-88

Estimated waiting period (high and low) .20 sec / 3.00 MIN

Estimated contact time .05-.10 sec

**COMPLETE ONLY IF ALTERNATE SYSTEMATIC VEHICLE SCREENING METHOD IS USED**

1. Start time \_\_\_\_\_ End time \_\_\_\_\_  
Method used \_\_\_\_\_
2. Start time \_\_\_\_\_ End time \_\_\_\_\_  
Method used \_\_\_\_\_
3. Start time \_\_\_\_\_ End time \_\_\_\_\_  
Method used \_\_\_\_\_

02/27/18  
15:33

Pima County Sheriff's Department  
Detail Incident Report

Page: 1120  
1

Incident #: 180224001

LAW INCIDENT:  
-----

Nature: DUI DEPLOYMENT      Address: 1750 E BENSON HY  
Location: City of Tucson      City: Tucson      ST: AZ      Zip: 85714

Offense Codes: 6104  
Received By: Barkman,DawnM      How Received: Telephone      Agency: PCSD  
Rspndg Officers: Barkman,DawnM  
Rspnsbl Officer: Barkman,DawnM      Disposition: Active      on 02/13/18  
When Reported: 15:36:52 02/13/18  
Occurred: Between 15:36:52 02/13/18      and 15:36:52 02/13/18

NARRATIVE:  
-----

Initial Case Typed By D. M. Barkman #1120 in Supp. 1

Assigned_To	Detail	Date_Assigned	Status	Status_Date	Due_Date
-----	-----	-----	-----	-----	-----
		**/**/**		**/**/**	**/**/**

Case History:  
-----

02/27/18  
15:33

Pima County Sheriff's Department  
Detail Incident Report

Page: 1120  
2

Incident #: 180224001

INVOLVEMENTS:  
-----

Type	Record #	Date	Relationship
lwmain	180224274	02/26/18	C/U CASE

-----

02/27/18  
15:33

Pima County Sheriff's Department  
Detail Incident Report

1120  
Page: 3

Incident #: 180224001

=====  
SUPPLEMENTAL NARRATIVE: (LWSUPL: Supplement Nbr. 1)  
=====

01:47:17 02/25/2018 - Barkman, DawnM  
Case No. 180224001

On February 24, 2018, a Multi-Agency DUI Sobriety Checkpoint was conducted with the Department of Public Safety on Aviation Rd./Richey Blvd. in the San Xavier District.

I (Sgt. Dawn Barkman #1120) of the DUI Unit planned the operation and conducted an informational briefing for personnel participating in the deployment. The briefing took place at the Pima County Sheriff's Administration Building located at 1750 E. Benson Hwy. Operational information was delivered by me via PowerPoint to personnel who were participating in the checkpoint deployment. A list of personnel included:

Sgt. Dawn Barkman  
Sgt. Guy Quaintance  
Deputy Brett Bernstein  
Deputy Louis Avila  
Deputy Douglas Mosman  
Deputy Daniel Caballero  
Deputy Robert Murray  
Deputy Jeffrey Creller  
Deputy Jose Velasco  
Deputy Gabriel Maynes  
Deputy Clint Enderle  
Deputy Ryan Roher  
Deputy Jorge Rodriguez  
Deputy Lee Hays  
Deputy Khamseh (fox unit)

DPS Trooper Eric Kish  
DPS Trooper Michael Blute

SAV's  
Alexzandra Munoz  
Abdul Anouti  
Michael Barr  
Dan Cohn  
S. Permut  
James Fisher  
Brenda Schupbach  
Brett Wright

AZ Rangers  
Ryan West  
Mike Schmid  
Manuel Parra  
Jeff Land  
Pete Rice

02/27/18  
15:33

Pima County Sheriff's Department  
Detail Incident Report

1120  
Page: 4

Incident #: 180224001

Once personnel were given their assignments and submitted their briefing checklists they traveled to the checkpoint location for set-up. The checkpoint became operational at 2113 hours and ended at 2320 hours. Due to high volume of traffic, the checkpoint was open for through traffic at 2144 hours; closed (for checkpoint operations) at 2147 hours; open for through traffic at 2218 hours; closed (for checkpoint operations) at 2224 hours and finally closed at 2320 hours.

During the time the checkpoint was active, a total of 1008 vehicles were screened. There were fifteen (15) subjects directed to perform field sobriety tests (SFST's). There were six (6) arrests for DUI, three arrests made for drug possession and two (2) arrests made for persons with warrants. There was one designated driver gift card issued.

NFI

-----  
End of SUPPLEMENTAL NARRATIVE: (LWSUPL: Supplement Nbr. 1)  
-----

All incidents matching `180224001`  
-----

\*\*\* End of Report /tmp/rpt6OXqaa-rplwdir.rl\_1 \*\*\*



**PIMA COUNTY SHERIFF'S DEPARTMENT**  
Mark D. Napier, Sheriff  
**M E M O R A N D U M**

---

Date: January 3, 2018  
To: Lt. Stephen Carpenter, Commander, Special Operations  
From: Sgt. Dawn Barkman, Supervisor, Rincon TEU  
Subject: Approval for DUI Sobriety Checkpoint: February 24, 2018

---

I respectfully request authorization pursuant Pima County Sheriff's Department DUI Sobriety Checkpoint Guidelines to conduct a DUI Sobriety Checkpoint as follows:

**Location:** Aviation/Richey Blvd.  
**Date:** February 24, 2018  
**Hours of Operation:** 2100-2300  
**Projected Manpower:** PCSD: 18 deputies/3 sergeants

This checkpoint will focus on traffic traveling in the area of Aviation Rd./Richey Blvd. in the San Xavier District. This location has been identified for DUI enforcement by its propensity and history of alcohol related arrests and collisions. This operation will be staffed by personnel from the Pima County Sheriff's Department's Special Operations Section and Patrol Division personnel. The deployment will consist of a sobriety checkpoint.

Pima County Sheriff's Department supervisors will be on site as follows:

Checkpoint Commander: District and Force Commanders notified  
Operations Supervisor: Sgt. D. Barkman

Approved: \_\_\_\_\_

*SLC 1/18*  
Lt. Stephen Carpenter, Special Operations Commander

*1-8-18*  
DATE

02/22/18  
11:01

Pima County Sheriff's Department  
Law Total Incident, by Agency, Most serious Offenses

1120  
Page: 1

Offense	Total Incidents
Agency: Pima County Sheriff's Dept.	
1806 CONT SUBST/POSESSION MARIJUANA	1
2101 DUI FATAL ACCIDENT	1
2102 DUI PERSONAL INJURY ACCIDENT	24
2103 DUI PROPERTY DMG ONLY ACCIDENT	37
2104 DUI NON ACCIDENT	210
2201 LIQUOR LAWS FURNISH TO MINOR	2
2202 LIQUOR LAWS MINOR IN POSESSION	10
2203 LIQUOR LAWS DRINKING IN PUBLIC	19
2204 LIQUOR LAWS OTHER	31
3102 TRAFFIC ACC INJ W/AUTO	1
6306 Rule R3-1	1
Total Incidents for This Agency:	337
Total Incidents for This Report:	337

Report includes:  
All dates between `00:00:00 02/24/15` and `00:00:00 02/22/18`  
All agencies matching `PCSD`  
All natures  
All locations matching `S1`  
All responsible officers  
All dispositions  
All clearance codes  
All observed offenses between `2101` and `2204`  
All reported offenses  
All offense codes  
All circumstance codes

\*\*\* End of Report /tmp/rptGAWMia-rplwtiro.rl\_1 \*\*\*





# PIMA COUNTY SHERIFF'S DEPARTMENT

Mark D. Napier, Sheriff

## M E M O R A N D U M

---

Date: February 22, 2018  
To: Concerned Personnel  
From: Sgt. D. Barkman #1120, Rincon TEU Supervisor  
Subject: Checkpoint Operation: 180224001

---

In furtherance of our ongoing efforts to reduce impaired driving on Pima County roadways, the Pima County Sheriff's Department will be conducting a sobriety checkpoint on February 24, 2018, in the area of Aviation Rd./Richey Blvd. in the San Xavier District.

Personnel selected to work this operation were selected based on their expertise in the area of traffic investigations, their professionalism, and their commitment to the reduction of carnage caused by impaired motorists on Pima County roadways.

### Briefing information is as follows:

**Location:** Pima County Sheriff's Administration Building (SOC)  
**Date:** Saturday, February 24, 2018  
**Time:** 2000 Hours

Personnel shall bring a patrol vehicle, reflective vest, flashlight, necessary paperwork, and equipment. Adequate parking will be located in the vicinity of the checkpoint. Uniform attire will be class "C" long or short sleeve shirt. Personnel must be prepared for inclement weather.

Personnel selected for this assignment shall be familiar with the Pima County Sheriff's Department Sobriety Checkpoint Guidelines. The success of these operations, both legally and operationally, is based on adherence to these guidelines. Many of these procedures will be reviewed again at the checkpoint briefing, but individual knowledge of these procedures is critical to the success of the operation.

### Checkpoint Schedule:

2000 hours	Briefing
2030 hours	Travel to Site/Site Set-Up
2100 hours	Checkpoint Commences
2300 hours	Checkpoint Ends
2330 hours	Teardown/Saturation Patrol
0400 hours	Secure (10-42)

**Sobriety Checkpoint Assignments**  
**180224001**

**Checkpoint Commander:** District and Force Commander notified

**Checkpoint Supervisor:** Sgt. Barkman

**DUI Van/Phlebotomist:** TBD

**Sign Placement:** Velasco, Creller, Caballero, Mosman

**Checkpoint Set-up:** Bernstein

**Cones:** Enderle, Murray, Roher, Maynes, Rodriguez, Hays, Blute, Kish

**Security:** Avila

**Eastbound:** Sgt. Quaintance ✓

**Contact**

- Deputy Bernstein ✓
- Deputy Avila ✓
- Deputy Mosman ✓ w/1 Fox unit
- Deputy Caballero ✓
- DPS Trooper Kish ✓

**Chase (East of checkpoint)**

- Deputy Murray ✓
- Deputy Creller ✓

**Westbound:** Sgt. Barkman ✓

**Contact**

- Deputy ~~Roher~~ Velasco ✓
- Deputy Maynes ✓
- Deputy Enderle ✓
- Deputy Hays ✓
- DPS Trooper Blute ✓

**Chase (North of checkpoint)**

- Deputy Velasco Roher ✓
- Deputy Rodriguez ✓

Pima County Sheriff's Department

# MEDIA RELEASE

Mark D. Napier, Sheriff

## Multi-Agency DUI Sobriety Checkpoint February 20, 2018

On February 24, 2018, the Pima County Sheriff's Department and the Department of Public Safety will be conducting a DUI Sobriety Checkpoint in observance of the Rodeo weekend festivities. The Sheriff's Department is dedicated to its mission of taking impaired drivers off the roadway and making it safer for the citizens of Pima County. In 2018, the Pima County Sheriff's Department will work harder than ever to reduce the number of impaired drivers on our roadways.

If you are stopped you may:

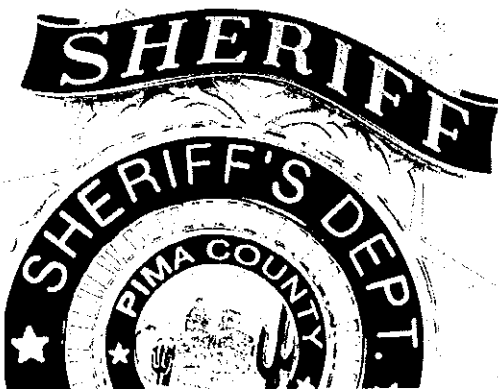
- Lose your license
- Have your vehicle impounded
- Pay excessive attorney's fees
- Be fined upon conviction
- Be required to install an ignition interlock device in your vehicle (at your cost)
- Spend time in jail
- End up with a criminal record

Make a plan BEFORE going out and consuming alcohol.

**GOING OUT TONIGHT ?.....SO ARE WE.**

Operational funding and equipment were made available through grants awarded by the Governor's Office of Highway Safety (GOHS).

For further information contact the Public Information Office at (520) 237-3740  
or [pcsdpio@sheriff.pima.gov](mailto:pcsdpio@sheriff.pima.gov).



**Pima County Sheriff's Department**

1750 E. Benson Highway Tucson, Arizona 85714

Phone: (520) 351-4600

Fax: (520) 351-8595

Twitter: @pimasheriff

[www.pimasheriff.org](http://www.pimasheriff.org)

## Pima County Sheriff's Department



DUI Sobriety Checkpoint  
 February 24, 2018  
 Aviation Rd /Richey Blvd  
 180224001

## Letter received by PCSD Office of Special Investigations regarding sobriety checkpoint 130315001

From: (Redacted)  
 Sent: Saturday, March 16, 2013 8:27 AM  
 To: lo  
 Subject: Thanks for your service

I am writing to thank your department and the officers serving for their diligence, attention and service to me and others in Pima County. Last evening, on my way back from friends in Oro Valley to our residence on N Graycroft, I went through a Sobriety checkpoint on I-19. There were a lot of officers manning the checkpoint, and I was treated cordially, and processed very promptly. While I suspect some may think it an intrusion, I believe the Sobriety check is a common sense way to keep the roads safer, and thank you for it. It reminded me of how often I see your officers in Oroville, keeping the area safe from intrusion and frankly, bad drivers. We are here for 4 months a year, residing in Maricopa during the remainder of the year. Pima County is a great place for us to be, and the Pima County Sheriff's office is one of the real contributors to our comfort and satisfaction with this place. Thank you for always being courteous, diligent and protective of us, and all of the Pima residents.

## Sobriety Checkpoints

### Why conduct sobriety checkpoints?

- Because NHTSA statistics reveal that impaired drivers may be on the road 772 times before being caught.
- Sobriety checkpoints increase the likelihood of deterring DUI and/or catching violators.
- Nationally - alcohol related traffic fatalities fell from 60+% in 1982 to 40% in 1997.
- The fatality rate has reached a plateau and remains 40 - 41%. (based upon statistics gathered from 1997-2004)



## PCSD Fatal Statistics

- 2014**
  - 20 fatal collisions
  - 7 impaired drivers (4 ETOH, 3 Drug)
  - Down significantly from 2013
- 2015**
  - 17 fatal collisions
  - 6 impaired drivers (ETOH/Drug)
  - 3 impaired victims from unimpaired drivers
- 2016**
  - 17 fatal collisions
  - 6 impaired drivers (ETOH/Drug)
  - 3 impaired victims from unimpaired drivers
- 2017**
  - 23 fatal collisions
  - 7 impaired drivers (ETOH/Drug)
  - 3 impaired victims from unimpaired drivers



## Checkpoint Effectiveness

Saturation Patrols  
 vs.  
 Sobriety Checkpoint Operations

- Highly publicized California Saturation Patrols reduced alcohol related crashes 17%.
- California Sobriety Checkpoints in four communities reduced alcohol related crashes by 28%.

### DUI checkpoints work; deaths, citations down



saturation patrols not enough, officers say

## Sobriety Checkpoints

- Surveys indicate 75% of Americans favor the use of sobriety checkpoints as a law enforcement tool.
- IACP, MADD, GOHS, NHTSA and many other agencies favor their use.
- These operations are generally funded by grants from the DUI Abatement Council (ACJC).



## Suspect in 1978 murder arrested at sobriety checkpoint

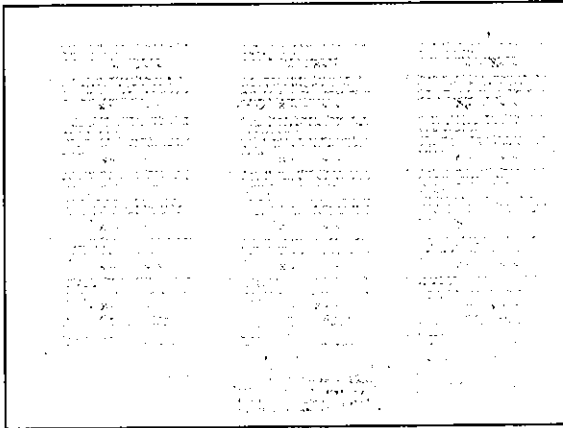
BY COURTNEY FLYNN  
Chicago Tribune

CHICAGO - The arrest of a man at a routine sobriety checkpoint this week in California turned out to be anything but ordinary after police discovered he was wanted in a nearly 30-year-old murder in Chicago.

Francisco Sandoval, who had been living under the name Leonel Sanchez Valencia in El Monte, Calif., was arrested Monday on suspicion of driving under the influence and when police ran his fingerprints, they found an arrest warrant.

## PCSD Checkpoint Results

- > 283 Sobriety Checkpoints conducted
- > 26 Phantom Checkpoints conducted
- > 205,745 Vehicles Stopped
- > 2513 Field Sobriety Tests
- > 728 DUI arrests
- > 583 Other arrests



## Survey Results through December 2017

- > Did the Sobriety Checkpoint cause a significant delay in your journey?  
Yes: 7% No: 93%
- > Do you believe Sobriety Checkpoints will deter some people from driving while impaired?  
Yes: 84% No: 16%
- > Do you believe Sobriety Checkpoints will increase an impaired driver's risk of being detected and arrested?  
Yes: 89% No: 11%
- > Do you approve of Sobriety Checkpoints as an enforcement measure to detect and remove impaired drivers from the roads in your community?  
Yes: 89% No: 11%
- > Do you live in the area of the Checkpoint where you were stopped?  
Yes: 63% No: 37%
- > Have you ever been arrested for Driving While Intoxicated?  
Yes: 5% No: 95%
- > I am male/ female.  
Male: 45% Female: 55%
- > My age is \_\_\_\_\_ Average: 57.44

\*\* based upon 100 returned questionnaires December 1-29, 2017

## Concerns

- > Traffic Jams and Delays- the goal of the checkpoint is to be no more intrusive than a traffic signal (about 2.5 minutes)
- > PCSD average has been less than 30 seconds.
- > Fair, Firm application of DUI laws while deterring impaired driving and promoting safety on Pima County Roadways



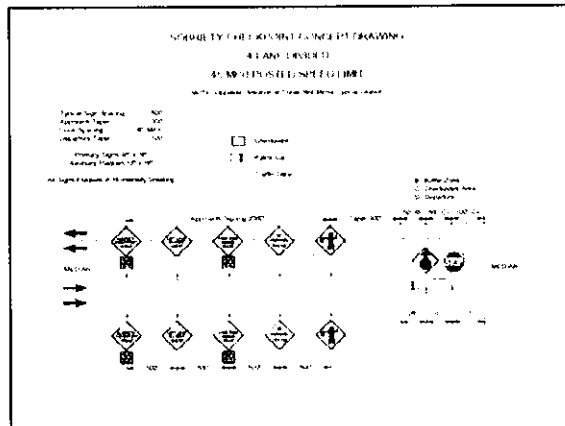
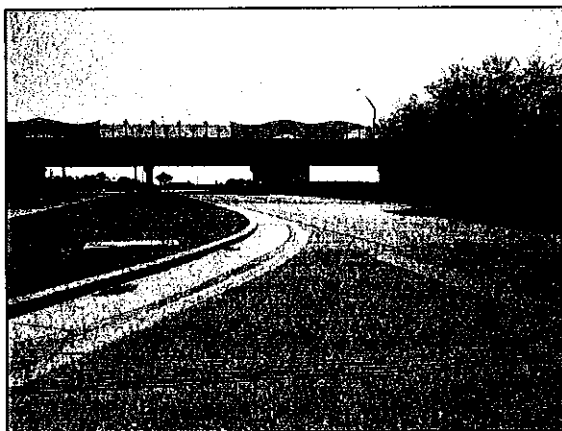
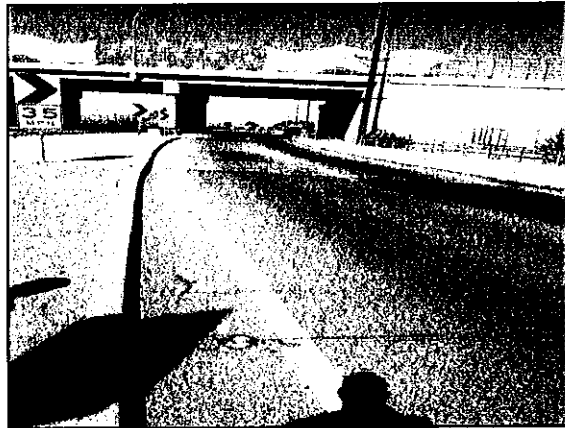
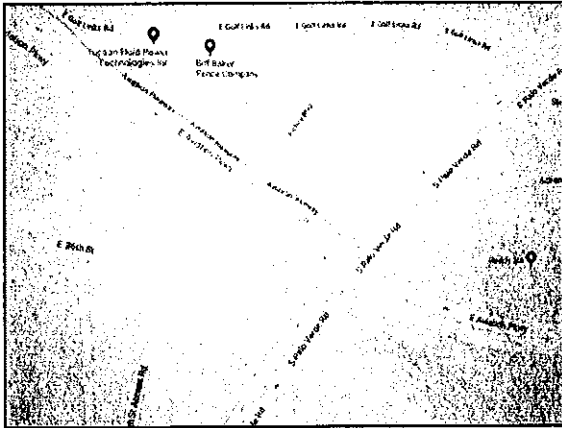
## Checkpoint Location

- > Aviation/Richey Blvd.
- > Since 2015, in San Xavier, Beat 1, there has been:
  - 1 DUI Fatal Accident
  - 24 Injury DUI Collisions
  - 37 DUI Property Damage
  - 210 DUI's
  - 62 Liquor Law violations



## Checkpoint Timeline

- > 2000 hours Briefing @ C103
- > 2030 hours Travel/Site setup
- > 2100 hours Checkpoint Commences
- > 2300 hours Checkpoint Ends
- > 2330 hours Teardown/Saturation Patrol
- > 0400 hours Secure (10-42)



## Logistics

- Parking - In approach areas, rear deck lights only
- SFST area: In median contact area
- Cars will be pulled outside coned off departure area.
- Restrooms: N/A



## Point Control

- SAV's
- AZ Rangers
- Victor w/lights
- DUI Van
- Lane closures and channeling
- Fully marked PCSD Patrol Vehicles



## Assignments

- **Checkpoint Commander:** District and Force Commander notified
- **Checkpoint Supervisor:** Barkman
- **DUI Van/Phlebotomist:** TBD
- **Sign Placement:** Velasco, Creller, Caballero, Mosman
- **Checkpoint Set-up:** Bernstein
- **Cones:** Enderle, Murray, Roher, Maynes, Rodriguez, Hays, Blute, Kish
- **Security:** Avila



## Aviation/Richey Blvd.

### Eastbound

Sgt. Quaintance

- Contact**
- Deputy Bernstein
  - Deputy Avila
  - Deputy Mosman
  - Deputy Caballero
  - Trooper Kish, DPS

### Chase (West of Checkpoint)

- Deputy Murray
- Deputy Creller

### Westbound

Sgt. Barkman

- Contact**
- Deputy Roher
  - Deputy Maynes
  - Deputy Enderle
  - Deputy Hays
  - Trooper Blute, DPS

### Chase (East of Checkpoint)

- Deputy Velasco
- Deputy Rodriguez

## SAFETY!

- Safety is the most important aspect of the operation
- **Reflective Vests must be worn at all times when in or near the roadway!**



## Communications

- Radio Frequency:
  - West 1
- Frequency will be monitored by PCSD dispatcher
- Use proper radio 10 code and supplement code.

## **SOBRIETY CHECKPOINT BRIEFING**

- The purpose of these checkpoints is to aid the Pima County Sheriff's Department in **detecting and deterring impaired drivers** while causing minimal inconvenience and detention to the motoring public. The real value of its ability to deter the impaired driver is a checkpoint where **no impaired drivers** are detected.

## **SOBRIETY CHECKPOINT BRIEFING**



- The location chosen for the checkpoint was based in part from statistical data involving DUI incidents in the surrounding area.
- The above Pin Map shows a recent history of DUI/alcohol incidents (UCR Code 21 01 - 22 04) in the area of the Checkpoint location

## **SOBRIETY CHECKPOINT BRIEFING**

Supervisors assigned to the Sobriety Checkpoint operation will supervise the on-scene enforcement activities. Supervisors will remain at the location for the duration of the operation.



## **SOBRIETY CHECKPOINT BRIEFING**

- Traffic control devices and personnel will be placed in conformance with the site map approved by Pima County Department of Transportation or Pima County Sheriff Department Sobriety checkpoint guidelines.



## **SOBRIETY CHECKPOINT BRIEFING**



- Deputies shall explain the purpose of the checkpoint upon approaching a vehicle. Each motorist should be advised that he/she has been stopped at a sobriety checkpoint established to identify impaired drivers.

## **SOBRIETY CHECKPOINT BRIEFING**

- The following question/statement shall be made upon approaching a vehicle:
- "Good evening, this is a Sobriety Checkpoint aimed at deterring impaired driving. Have you consumed any alcohol and/or drugs today?"



## **SOBRIETY CHECKPOINT BRIEFING**



➤ If the answer is no and there is no compelling reason to detain the vehicle, hand the driver a pamphlet and state, "This brochure explains the Sobriety Checkpoint program. Please look it over at your leisure."

## **SOBRIETY CHECKPOINT BRIEFING**

➤ If the answer is **yes**, ask how much and when. At this point, depending on the answers and other circumstances, the attending Deputy should consider if further investigation is warranted. If so, direct the driver to the nearby staging area to continue the investigation. If not, give the driver a brochure and advise them they are free to go.



## **SOBRIETY CHECKPOINT BRIEFING**

➤ If the driver is evaluated and is **not impaired**, provide a pamphlet and **escort** the driver to their vehicle and help them pull into traffic, if necessary.



## **SOBRIETY CHECKPOINT BRIEFING**

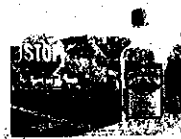
- Contact Deputies shall visually inspect the driver for **red, watery bloodshot eyes; abnormal complexion, vomit, urine or excrement on clothing; or other telltale signs of possible intoxication/impairment.**
- Inspection of the passengers, interior and exterior of the vehicle will also be made. Deputies should observe the driver's breath and look for plain view narcotics, narcotic paraphernalia, and alcoholic beverage containers

## **SOBRIETY CHECKPOINT BRIEFING**



➤ The use of artificial light for the inspection of the vehicle's interior and its occupants is legally permissible.

## **SOBRIETY CHECKPOINT BRIEFING**



➤ Unless the Deputy observes evidence of impairment, or there is evidence of a more serious violation, the motorist should be allowed to proceed on their way.

## **SOBRIETY CHECKPOINT BRIEFING**



- A search of the vehicle should be conducted to inventory prior to being towed.

## **SOBRIETY CHECKPOINT BRIEFING**



- A motorist who chooses to avoid the checkpoint should be allowed to proceed unless traffic violations are observed or probable cause exists to take other action. The mere act of avoiding a checkpoint will not constitute grounds for a stop.

## **SOBRIETY CHECKPOINT BRIEFING**

- Drivers who refuse to roll down their windows in order to avoid contact with a law enforcement officer will be waived through and may be followed by an observation car unless reasonable suspicion/ probable cause exists to further the investigation.

## **SOBRIETY CHECKPOINT BRIEFING**

- A systematic approach to stopping vehicles will be established. Either all vehicles will be stopped or a method will be utilized that does not involve random stops at the Deputy's discretion.
- It will be the on-scene supervisor's responsibility to make a change in the systematic sequence of vehicles stopped if the traffic pattern necessitates a change.

## **SOBRIETY CHECKPOINT BRIEFING**

- An Incident Report will be completed for each Sobriety Checkpoint deployment, including:
  - number of vehicles stopped
  - number of DUI arrests
  - other violations, which are observed and charged.
- Force Commander Summary will be completed
- Media has been notified
- Public notification via twitter, Facebook and PCSD Website



## **Contact Officer Duties**

- Make contact with vehicle operators
- Initiate investigations
- Follow through and complete investigation



## Equipment and Logistics:

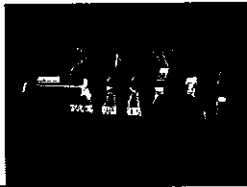
- Removal of vehicles (AZ Rangers/SAV's)
- FST's (Median area)
- PBT's (Checkpoint table)
- DRE
- Spanish Speaker
- Camera (Individual Deputies)

## Chase

- Observe vehicles entering traffic pattern
- Watch for turnarounds and stop should you find reasonable suspicion.
- Watch for drivers and passengers to swap
- Watch for littering
- Stop vehicles when advised by checkpoint personnel

## Statistics

- Contact personnel: At the end of the checkpoint operational period, report number of FST's administered, DUI arrests and other arrests.
- Chase vehicle personnel: Report all activity on stat summary for remainder of shift.





Department of Transportation

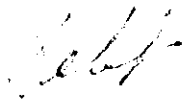
# MEMORANDUM

Department of Transportation

---

**DATE:** 9/2/05

**TO:** Karl Woolridge, Sergeant, Pima County Sheriff's Dept

**FROM:** Albert Letzkus, Traffic Engineering Division Manager, PCDOT 

**SUBJECT:** Proposed Signing Plans for DWI Checkpoints

---

Enclosed with this memo are proposed signing plans for DWI checkpoints on County roads. They include plans for two-lane roads and for divided multi-lane roads. As I understand it, the signs for these checkpoints have been made by TED and delivered to you. Let me know when and where you will need the traffic cones, and I will coordinate their delivery to you with the Ops division.

If you have any questions about the proposed plans, feel free to call me at work at 740-5029, or on my cell phone at 850-3982.

Thank you

Enclosures

cc Tracy Shaw  
Kurt Brei  
Dave Cummings

# SOBRIETY CHECKPOINT CONCEPT DRAWING

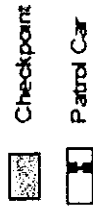
## 4-LANE DIVIDED

### 45 MPH POSTED SPEED LIMIT

NOTE: Opposite Direction of Travel Will Mirror Typical Layout

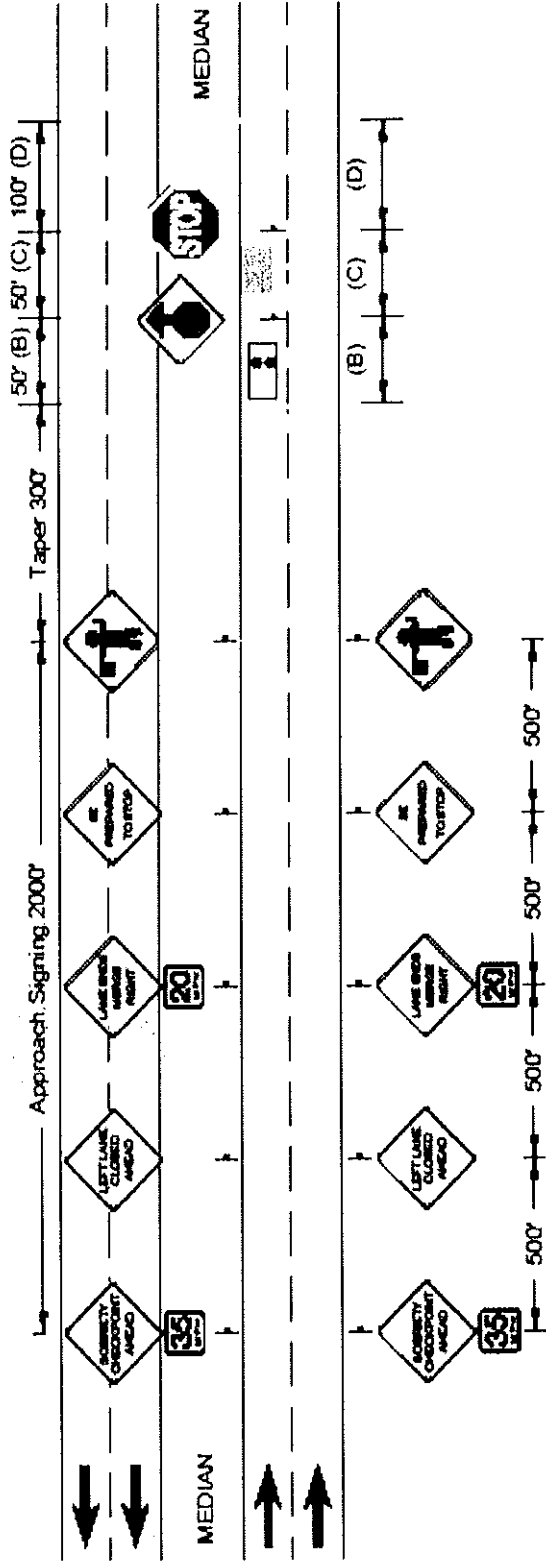
Typical Sign Spacing 500'  
 Approach Taper 300'  
 Cone Spacing 40' MAX  
 Departure Taper 100'

Primary Signs 36" x 36"  
 Advisory Plaques 18" x 18"



All Signs/Plaques in Hi-Intensity Sheeting

(B) Buffer Zone  
 (C) Checkpoint Area  
 (D) Departure



## Sobriety Checkpoint Supervisor Checklist

- Select and scout location
- Site measurements for signing
- Operations Plan
- Positioning/ Scheduling/ Manpower documents
- Notice memorandums to participating personnel
- Communications
  - Dispatcher if needed
- Approval from Special Ops Commander
  - Approval memorandum
  - Ops plan
  - Site diagram
  - Signing plan
  - Briefing documents
  - Sobriety Checkpoint guidelines
  - Procedures checklist
  - **Note:** *The above documents are to be submitted to Records under the master case number.*
- Notify PIO
  - Press release
- Arrange SAV's
  - Command Center
  - Command Post Bravo
  - Command Post Victor
  - Other \_\_\_\_\_
- Supplies:
  - Questionnaires
  - Procedures checklist
  - PBT's
  - Signing
  - Cones

## Sobriety Checkpoint Administrative Deputy Checklist

- Call Number
- Distribute/ Collect/ Turn in checklists under the case number
- Statistic sheet
- Supplies
  - 20 Blood kits
  - 6 PBT's
  - Mouthpieces
  - 2 Tables
  - Masking tape
  - Forms
  - Questionnaires
- Signing
  - Four Lane Road- Large Trailer
    - 8 stop signs
    - 4 Sobriety Checkpoint Ahead/ 35 MPH signs
    - 4 Left Lane Closed signs
    - 4 Lane Ends Merge Right signs
    - 4 Be Prepared to Stop signs
    - 4 Flagman Signs
  - Two Lane Road- Small trailer
    - 6 stop signs
    - 2 Sobriety Checkpoint Ahead/ 35 MPH signs
    - 2 Lane Closed Ahead/ 20 MPH signs
    - 2 Be Prepared to Stop signs
    - 2 Flagman Signs
- Force Commander Summary
  - Number of vehicles stopped
  - Number of DUI arrests
  - FST's Administered
  - Other Violations
- Case report
  - Number of vehicles stopped
  - Number of DUI arrests
  - FST's Administered
  - Other Violations

# Pima County Sheriff's Department Sobriety Checkpoint Guidelines

## I. Purpose

The purpose of this policy is to provide guidelines for the physical construction and operation of a sobriety checkpoint. The goal of the checkpoint will be maximizing its deterrent effect by increasing the perceived risk of apprehension of motorists who would operate a motor vehicle while impaired by alcohol or drugs.

## II Policy

- A. It shall be the policy of the Pima County Sheriff's Department to implement a sobriety checkpoint program. The sobriety checkpoint program will be used as a part of the Pima County Sheriff's Department's ongoing comprehensive traffic enforcement efforts. To standardize this program, the following set of written guidelines has been developed governing the operation of sobriety checkpoints within the Pima County Sheriff's Department's jurisdiction.
- B. To implement this policy, the Special Operations Commander will ensure that the Traffic Unit or DUI Unit Supervisor complies with the following restrictions:
1. Satisfy the legal requirements for sobriety checkpoints.
  2. Conduct sobriety checkpoints with a minimum amount of intrusion or inconvenience to the motoring public.
  3. Assure the safety of the general public and of the participating law enforcement officers.
  4. Objectively select a sobriety checkpoint site based on relevant data.
  5. Provide for public information and education to maximize the deterrent effect and heighten awareness of the impaired driver problem.
  6. Provide for a systematic procedure for both data collection and post checkpoint reporting to insure consistency with checkpoint guidelines.
  7. Select participating law enforcement officers based on relevant training, skills, and experience.
  8. Brief participating deputies on operational guidelines prior to the



beginning of these checkpoints.

## II Guidelines

### A. General

1. Sobriety checkpoints will not be conducted without the approval of the Special Operations Commander or his designee.
2. A statistical summary and justification for establishing a sobriety checkpoint shall be presented to the Special Operations Commander for review and approval.
3. The selection of the date, time, and location of the sobriety checkpoint will be made by the Traffic or DUI Supervisor.
4. The Traffic or DUI Supervisor shall give no less than one day notice to the Press Information Officer Supervisor for dissemination to the general public. This announcement will not specify the location of the checkpoint but rather the Pima County Sheriff's Department's use of sobriety checkpoints for impaired driver deterrence.
5. The Traffic or DUI Supervisor shall conduct a briefing for all personnel assigned to operate the sobriety checkpoint. The Traffic or DUI Supervisor shall provide such personnel with required guidelines and procedures as well as answer questions concerning the operation.

### B. Physical Construction of Sobriety Checkpoints

1. All sobriety checkpoints established by the Pima County Sheriff's Department shall strive for consistency with accepted procedures regarding the use of warning signs, barricades, traffic cones, warning lights, and other safety equipment and/ or warning devices that may be required.
2. Checkpoints will be categorized as follows:
  - A. **Large scale checkpoints** will be used on high volume, arterial type roadways and thoroughfares. These checkpoints will require a site plan with approval from the Pima County Department of Transportation as to the physical location and layout of the operation

- B. **Small scale checkpoints** will be used on smaller, rural type roadways. These operations will typically be manned by fewer personnel and constructed by Pima County Sheriff's Department personnel. The intent of these checkpoints is to be rapidly deployed and capable of tear down and relocation on short notice. These small scale checkpoints will generally be supported by a saturation type DUI patrol in the surrounding area.
  - C. **Phantom checkpoints** will be used on either arterial roadways or on lower volume traffic ways. The intent of these set ups is to give the motorists the impression that a checkpoint is either being prepared or was just completed. The appropriate signing and an emergency vehicle will be deployed but the checkpoint will not actually stop vehicles. Generally, a saturation patrol will be deployed in the vicinity of these checkpoints.
- 3. For the safety of law enforcement officers and the motoring public, vehicles will be, where possible, directed by means of warning signs, lights, traffic cones, or other safety equipment into a single traffic lane.
  - 4. All vehicles shall be required to stop at the checkpoint except as outlined in this procedure. Portable stop signs in addition to the directions of a uniformed law enforcement officer shall be utilized for this purpose.
    - A. At large scale checkpoints, a staggered stop of all vehicles shall be employed. All vehicles shall be motioned to a stop approximately 30 to 50 feet from the contact law enforcement officer. As the contact law enforcement officer concludes speaking with the operator of a vehicle, the next vehicle waiting shall be signaled to pull forward and then stop in the immediate vicinity of the contact law enforcement officer.
    - B. At small scale checkpoints, operators will be directed to stop by the law enforcement officer making contact with each vehicle.
  - 5. Adequate off street parking for follow up investigation (field sobriety testing and screening) shall be available in the immediate vicinity of the sobriety checkpoint.
  - 6. The Traffic or DUI Supervisor shall obtain permission from the owner

or agent of any private property or parking area used for this police purpose.

**C. Operator Contact at Sobriety Checkpoints**

1. All contact law enforcement officers shall be uniformed so as to assure the public that the sobriety checkpoint is a legitimate governmental operation.
2. All contact law enforcement officers shall wear a reflective traffic safety vest.
3. Only those law enforcement officers with DUI training shall participate as contact law enforcement officers at sobriety checkpoints.
4. The contact law enforcement officer shall utilize a statement/ question similar to the following upon contact with the driver of a stopped vehicle:

***Good evening. This is a sobriety checkpoint aimed at deterring impaired driving. Have you consumed any alcohol or drugs today?@***

If the driver's answer is no and there is no other compelling reason to detain the vehicle, the contact law enforcement officer shall permit the vehicle to proceed.

5. During the conversation with the driver, the contact law enforcement officer will establish if reasonable suspicion exists to warrant further investigation.
6. The contact law enforcement officer shall pay particular attention to any symptoms or indicators of impairment to include but not limited to
  - A. Ability to follow directions as to the physical layout of the checkpoint as well as those given by checkpoint personnel.
  - B. The driver's speech, coordination, appearance, eyes, and any odor of intoxicants or other contraband.

- C. An odor of intoxicants warrants asking the driver if he or she has been drinking.
  - D. Irrational or erratic behavior consistent with an impaired subject.
7. Contact law enforcement officers shall utilize a flashlight or other form of artificial light to illuminate the driver, occupants, and interior of all vehicles for the purpose of their safety as well as to check the condition of the driver and monitor the actions of the occupants in the vehicle. If during this initial contact the deputy establishes a reasonable suspicion for further investigation, the operator will be escorted to an adjacent area for further screening.
  8. If such reasonable suspicion does not exist, the driver will be allowed to proceed.

**D. Impaired Driver Screening**

1. Suspected impaired drivers shall be processed in accordance with Pima County Sheriff's Department procedures related to DUI investigations. Law enforcement Officers participating in the operation shall administer such tests as practical and in accordance with their training in DUI investigation.
2. The law enforcement officer making initial contact with the operator shall remain with that driver throughout the remainder of the investigation.
3. If an operator displays impairment inconsistent with their blood alcohol level, a Drug Recognition Expert should be used to evaluate the operator.
4. If the law enforcement officer determines through the screening process that there is not probable cause to make an arrest, the operator shall be released.

## **E. Supervisor Responsibilities**

1. A supervisor shall be present at the checkpoint at all times.
2. If the on scene supervisor at the checkpoint determines that a hazard is being created by the backup of stopped vehicles, he may suspend the checkpoint for a period of time in order to relieve the traffic congestion.
3. If there are an insufficient number of law enforcement officers to properly conduct the checkpoint at any given time, the on scene supervisor may suspend the checkpoint until such time as staffing becomes available.
4. Documentation shall be maintained regarding the length of time the checkpoint was suspended and the reason for the suspension.
5. The supervisor shall ensure that the following statistics are maintained:
  - A. Number of vehicles passing through the checkpoint
  - B. The number of operators field tested
  - C. The number of operators arrested
  - D. The charges brought against each arrested driver
6. A telephone shall be made available to facilitate the release of arrestees to responsible parties or to obtain alternate transportation.
7. Transportation shall be available to handle any arrestees who cannot be field released.
8. The Traffic or DUI Supervisor shall insure that a detailed report is completed with the statistical data from each checkpoint.
9. The Traffic or DUI Supervisor shall insure that an Incident Resume is completed documenting the DUI checkpoint and its results.

**F. Avoidance of Checkpoint**

1. Vehicles that make a U-turn or otherwise maneuver to avoid the checkpoint may be followed by an observation car. The law enforcement officer may make a stop if he has reasonable suspicion. If no reasonable suspicion exists, the observation car will return to the checkpoint without stopping the vehicle.
2. Drivers who refuse to roll down their windows in order to avoid contact with a law enforcement officer will be waived through and may be followed by an observation car. (The same procedure as in paragraph 1 will apply.)
3. Vehicles that refuse to stop within the checkpoint area may be stopped and cited for the appropriate violation(s). Such drivers shall also be examined for signs and symptoms of impairment.
4. Drivers who refuse to participate or cooperate for any reason shall not be detained solely for that reason. (The procedures outlined in paragraph 2 shall be followed.)

revised

May 19, 2006  
Sgt. D. Theel #860