

Pima County Sheriff's Department
Sobriety Checkpoint



160227001

Nogales Hwy. n/o Old Nogales Hwy.



Sobriety Checkpoint Statistic Form

Date: Saturday, February 27, 2016

Location of Checkpoint: Nogales Hwy. n/o Old Nogales Hwy.

Start Time 2104 End Time 2304

Number of Deputies 17

Number of Supervisors 3

Vehicles Stopped 872

DUI Investigations 2

Number of DUI arrests 0

Other arrests (specify) 2

Estimated waiting period (high and low) .10 sec/ .15 sec

Estimated contact time .5-10 sec

COMPLETE ONLY IF ALTERNATE SYSTEMATIC VEHICLE SCREENING METHOD IS USED

1. Start time _____ End time _____
Method used _____
2. Start time _____ End time _____
Method used _____
3. Start time _____ End time _____
Method used _____



Pima County Sheriff's Department

Detail Incident Report for 160227001

Nature: DUI DEPLOYMENT
Location: City of Tucson

Address: 1750 E BENSON HY
Tucson AZ 85714

Offense Codes: 6102

Received By: Barkman,DawnM
Responding Officers: Barkman,DawnM
Responsible Officers: Barkman,DawnM
When Reported: 15:20:06 02/17/16

How Received: Telephone

Agency: PCSD

Disposition: Active 02/17/16
Occurred Between: 15:20:06 02/17/16 and 15:20:06 02/17/16

NARRATIVE:

Initial Case Typed By D. M. Barkman #1120 in Supp. 1

Assigned To:
Status:

Detail:
Status Date: **/**/**

Date Assigned: **/**/**
Due Date: **/**/**

Case History:

INVOLVEMENTS:

<u>Type</u>	<u>Record</u>	<u>Date</u>	<u>Relationship</u>
lwmain	160227262	02/28/16	C/U CASE
lwmain	160228017	02/28/16	C/U CASE
lwmain	160228036	02/28/16	C/U CASE

SUPPLEMENTAL NARRATIVE: (LWSUPL: Supplement Nbr. 1)

Name: Barkman,DawnM
Date: 02:42:56 02/28/16
02:42:56 02/28/2016 - Barkman,DawnM
Case No. 160226001

On February 27, 2016, a DUI Sobriety Checkpoint was conducted on Nogales Hwy. n/o Old Nogales Hwy. in the Pima County Sheriff's Department (PCSD) San Xavier Distridt.

I (Sgt. Dawn Barkman #1120) of the DUI Unit planned the operation and conducted an informational briefing for personnel participating in the deployment. The briefing took place at the Sheriff's Department's Administration Building located at 1750 E. Benson Hwy. Operational information was delivered by me via PowerPoint to personnel who were participating in the checkpoint deployment. A list of personnel included:

Lt. Gary Anderson
Sgt. Dawn Barkman
Sgt. Costaki Manoleas
Sgt. Mark Bustamante
Deputy Tim Senne
Deputy Matthew Dixon
Deputy Brett Bernstein
Deputy Jorge Rodriguez
Deputy Louis Avila
Deputy Matthew Lesage
Deputy Clint Enderle
Deputy Christopher Rodriguez
Deputy Steven Copp
Deputy Ryan Roher
Deputy Robert Murray
Deputy Douglas Mosman
Deputy Katrina Jones
Deputy Curtis Greenman
Deputy Dennis Bret
Deputy Theordore Hartenstein
Deputy Jose Velasco

Pima County Attorney's Office
Rudy Padilla

Valerie Stranieri
Pooja Kedia
Patrice Werlin

SAV's
Lawrence Brothers
Kathryn Brothers
Michael Barr
John Ryan
Roberto Valenzuela
Brenda Shupbach

Arizona Rangers
Richard Butler
J. Phibbons
Henry Zappia
Jeff Land
Manuel Parra
Pete Rice

Once personnel were given their assignments and submitted their briefing checklists, they travelled to the checkpoint location for set-up. The checkpoint became operational at 2104 hours and ended at 2304 hours. During the time the checkpoint was active, a total of 872 vehicles were screened. There were two (2) subjects directed to perform field sobriety tests (FST's) which resulted in no DUI arrests; however there were two (2) arrests made for Title 4. A total of five (5) designated driver gift cards were issued.

After the checkpoint concluded, saturation patrol was conducted in the San Xavier District. NFI

End of SUPPLEMENTAL NARRATIVE: (LWSUPL: Supplement Nbr. 1)



Pima County Sheriff's Department
Chris Nanos, Sheriff

MEMORANDUM

To: Lt. Gary Anderson, Commander, Traffic Section From: Sgt. Dawn Barkman, Supervisor, DUI Unit

Re: **Approval for Sobriety Checkpoint: February 27, 2016**

Date: January 8, 2016

I respectfully request authorization pursuant Pima County Sheriff's Department Sobriety Checkpoint guidelines to conduct a Sobriety Checkpoint as follows:

- Location:** 8200 S. Nogales Hwy.
- Date:** February 27, 2016
- Hours of Operation:** 2100-2300
- Projected Manpower:** PCSD: 18 deputies/3 sergeants


This checkpoint will focus on traffic traveling in the area of 8200 S. Nogales Hwy. in the San Xavier District. This location has been identified for DUI enforcement by its propensity and history of alcohol related arrests and collisions. This operation will be staffed by personnel from the Pima County Sheriff's Department's Special Operations Section and Patrol Division. The deployment will consist of a sobriety checkpoint.

Pima County Sheriff's Department supervisors will be on site as follows:

Checkpoint Commander: District and Force Commanders notified

Operations Supervisor: Sergeant Barkman

Approved


Lieutenant Gary Anderson, Traffic Section Commander

2-1-16
Date

02/23/16
13:48

Pima County Sheriff's Department
Law Total Incident, by Agency, Most serious Offenses

Page: 1120
1

Offense	Total Incidents
Agency: Pima County Sheriff's Dept.	
1806 CONT SUBST/POSESSION MARIJUANA	1
2101 DUI FATAL ACCIDENT	1
2102 DUI PERSONAL INJURY ACCIDENT	20
2103 DUI PROPERTY DMG ONLY ACCIDENT	46
2104 DUI NON ACCIDENT	218
2201 LIQUOR LAWS FURNISH TO MINOR	4
2202 LIQUOR LAWS MINOR IN POSESSION	11
2203 LIQUOR LAWS DRINKING IN PUBLIC	33
2204 LIQUOR LAWS OTHER	36
2401 DISTURBING THE PEACE	1
3116 TRAF ACC INJ W/FIXED, LEAVING	1
4900 SUPPLEMENT	1

Total Incidents for This Agency: 373

Total Incidents for This Report: 373

Report includes:

- All dates between `00:00:00 02/27/13` and `00:00:00 02/23/16`
- All agencies matching `PCSD`
- All natures
- All locations matching `S1`
- All responsible officers
- All dispositions
- All clearance codes
- All observed offenses between `2101` and `2204`
- All reported offenses
- All offense codes
- All circumstance codes

*** End of Report /tmp/rpt7z3Mqa-rplwtiro.r1_1 ***



Pima County Sheriff's Department
Chris Nanos, Sheriff

MEMORANDUM

To: Concerned Personnel

From: Sgt. Dawn Barkman
DUI Unit Supervisor

Re: **Checkpoint Operation:
160227001**

Date: February 23, 2016

In furtherance of our ongoing efforts to reduce impaired driving on Pima County roadways, the Pima County Sheriff's Department will be conducting a sobriety checkpoint on February 27, 2016, on Nogales Hwy. n/o Old Nogales Hwy.

Personnel selected to work this operation were selected based on their expertise in the area of traffic investigations, their professionalism, and their commitment to the reduction of carnage caused by impaired motorists on Pima County roadways.

Briefing information is as follows:

Location: 1750 E. Benson Hwy (C103)
Date: Saturday, February 27, 2016
Time: 2000 Hours

Personnel shall bring a patrol vehicle, reflective vest, flashlight, necessary paperwork, and equipment. Adequate parking will be located in the vicinity of the checkpoint. Uniform attire will be class "C" long or short sleeve shirt. Personnel must be prepared for inclement weather.

Personnel selected for this assignment shall be familiar with the Pima County Sheriff's Department Sobriety Checkpoint Guidelines. The success of these operations, both legally and operationally, is based on adherence to these guidelines. Many of these procedures will be reviewed again at the checkpoint briefing, but individual knowledge of these procedures is critical to the success of the operation.

Checkpoint Schedule:

2000 hours Briefing @ C103 (SOC)
2030 hours Travel to Site/Site Set-Up
2100 hours Checkpoint Commences
2300 hours Checkpoint Ends
2330 hours Teardown/Saturation Patrol
0400 hours Secure (10-42)

Sobriety Checkpoint Assignments
160227001

Checkpoint Commander: District and Force Commander notified

Checkpoint Supervisor: Barkman

DUI Van/Phlebotomist: J. Rodriguez

Sign Placement: C. Rodriguez, Velasco, Senne, Copp, Dixon

Checkpoint Set-up: Roher

Cones: Enderle, Murray, J. Rodriguez, Bernstein, Mosman, Jones, Greenman, Bret, Hartenstein, Zacarias

Security: Pre – Avila/Post - Roher

Northbound: ✓ Sgt. Bustamante

Contact

- ✓■ Deputy Senne
- ✓■ Deputy Dixon
- ✓■ Deputy Bernstein
- ✓■ Deputy Mosman
- ✓■ Deputy Jones
- ✓■ Deputy J. Rodriguez (as needed)
- ~~Officer Art Zacarias – AZ Liquor Board~~

✓ G. Gary Anderson

Chase

- ✓■ Deputy Avila
- ✓■ Deputy Velasco ←

Southbound: ✓ Sgt. Manoleas

Contact

- ✓■ Deputy Enderle
- ✓■ Deputy C. Rodriguez
- ✓■ Deputy Copp
- ✓■ Deputy Greenman
- ✓■ Deputy Bret
- ✓■ Deputy Hartenstein
- ✓ Deputy Lesage ←

Switched

Chase

- ✓■ Deputy Roher
- ✓■ Deputy Murray

Pima County Sheriff's Department **MEDIA RELEASE**

Chris Nanos, Sheriff

DUI Sobriety Checkpoint **February 23, 2016**

On February 27, 2016, the Pima County Sheriff's Department will conduct a DUI Sobriety Checkpoint. Our mission is to take impaired drivers off the roadway. We are committed to working relentlessly in making our community safe.

If you plan on going out and consuming alcohol, here are a few safety tips:

- Prior to drinking, designate a non-drinking driver when with a group.
- Don't let your friends drive impaired. Take away their keys before they get behind the wheel.
- If you have been drinking, get a ride home from a sober driver or call a taxi.
- If you are hosting a party, remind guests to plan ahead and designate a sober driver, or make plans to stay the night.

Operational funding and equipment were made available through grants awarded by the Governor's Office of Highway Safety.

For further information contact the Public Information Office at (520) 237-3740 or pcsdpio@sheriff.pima.gov.



Pima County Sheriff's Department
1750 E. Benson Highway Tucson, Arizona 85714
Phone: (520) 351-4600 Fax: (520) 351-8595
Twitter: @pimasheriff www.pimasheriff.org

NOT FOR PUBLIC DISSEMINATION

In furtherance of our ongoing efforts to reduce impaired driving on Pima County roadways, the Pima County Sheriff's Department will be conducting a sobriety checkpoint on Saturday, February 27, 2015.

Personnel chosen to work this operation were selected based on their expertise in the area of DUI investigations, their professionalism, and their commitment to the reduction of impaired motorists on Pima County roadways.

Briefing information is as follows:

Location: 1750 E. Benson Highway, Sheriff's Operation Center

Date: Saturday, February 27, 2016

Time: 2000 Hours

Checkpoint Locations: 8200 Block of S. Nogales Highway

Checkpoint Schedule:

2000 hours	Briefing
2030 hours	Travel to Site/Site Set-Up
2100 hours	Checkpoint Commences
2300 hours	Checkpoint Ends
2330 hours	Saturation Patrol Commences

For more information contact:
Sergeant Dawn Barkman at 548-2530

Pima County Sheriff's Department



DUI Sobriety Checkpoint
February 27, 2016
 Nogales Hwy. n/o Old Nogales Hwy.
160227001

PCSD Fatal Statistics

2012

- 38 fatal collisions
- Toxicology reports pending
- 19 were alcohol and/or drug related.

2013

- 30 fatal collisions
- 17 impaired drivers (7 ETOH; 10 Drug)
- Down slightly from 2012.

2014

- 20 fatal collisions
- 7 impaired drivers (4 ETOH; 3 Drug)
- Down significantly from 2013.

2015

- 17 fatal collisions
- 8 impaired drivers (ETOH/Drug)
- 3 impaired victims from unimpaired drivers



Letter received by PCSD Office of Special Investigations regarding sobriety checkpoint 130315001

From: (Redacted)
Sent: Saturday, March 16, 2013 8:27 AM
To: Ia
Subject: Thanks for your service

I am writing to thank your department and the officers serving for their diligence, attention and service to me and others in Pima County. Last evening, on my way back from friends in Oro Valley to our residence on N. Craycroft, I went through a Sobriety checkpoint on I-19. There were a lot of officers manning the checkpoint, and I was treated cordially, and processed very promptly. While I suspect some may think it an intrusion, I believe the Sobriety check is a common sense way to keep the roads safer, and thank you for it. It reminded me of how often I see your officers in Craycroft, keeping the area safe from invasion and frankly, bad drivers. We are here for 4 months a year, residing in Minnesota during the remainder of the year. Pima County is a great place for us to be, and the Pima County Sheriff's office is one of the real contributors to our comfort and satisfaction with this place. Thank you for always being courteous, diligent and protective of us, and all of the Pima residents.

Checkpoint Effectiveness

Saturation Patrols
 vs.
 Sobriety Checkpoint Operations

- > Highly publicized California Saturation Patrols reduced alcohol related crashes 17%.
- > California Sobriety Checkpoints in four communities reduced alcohol related crashes by 28%.

DUI checkpoints work; deaths, citations down



saturation patrols not enough, officers say

Sobriety Checkpoints

> Why conduct sobriety checkpoints?

- Because NHTSA statistics reveal that impaired drivers may be on the road 772 times before being caught
- Sobriety checkpoints increase the likelihood of deterring DUI and/or catching violators.



> Nationally - alcohol related traffic fatalities fell from 60+% in 1982 to 40% in 1997.

> The fatality rate has reached a plateau and remains 40 - 41%.

(based upon statistics gathered from 1997-2004)

Sobriety Checkpoints

- > Surveys indicate 75% of Americans favor the use of sobriety checkpoints as a law enforcement tool.
- > IACP, MADD, GOHS, NHTSA and many other agencies favor their use.
- > These operations are generally funded by grants from the DUI Abatement Council (ACJC).



Suspect in 1978 murder arrested at sobriety checkpoint

BY COURTNEY FLYNN
Chicago Tribune

CHICAGO - The arrest of a man at a routine sobriety checkpoint this week in California turned out to be anything but ordinary after police discovered he was wanted in a nearly 30-year-old murder in Chicago.

Francisco Sandoval, who had been living under the name Leonel Sanchez Valencia in El Monte, Calif., was arrested Monday on suspicion of driving under the influence and when police ran his fingerprints, they found an arrest warrant.

Survey Results through 12/31/15

- > Did the Sobriety Checkpoint cause a significant delay in your journey?
Yes: 6% No: 94%
- > Do you believe Sobriety Checkpoints will deter some people from driving while impaired?
Yes: 84% No: 16%
- > Do you believe Sobriety Checkpoints will increase an impaired driver's risk of being detected and arrested?
Yes: 95% No: 5%
- > Do you approve of Sobriety Checkpoints as an enforcement measure to detect and remove impaired drivers from the roads in your community?
Yes: 94% No: 6%
- > Do you live in the area of the Checkpoint where you were stopped?
Yes: 71% No: 29%
- > Have you ever been arrested for Driving While Intoxicated?
Yes: 3% No: 97%
- > I am male/ female.
Male: 54% Female: 46%
- > My age is _____. Average: 61

* Based upon 228 returned questionnaires Dec. 1-31, 2015

PCSD Checkpoint Results

- > 250 Sobriety Checkpoints conducted
- > 26 Phantom Checkpoints conducted
- > 180,225 Vehicles Stopped
- > 2364 Field Sobriety Tests
- > 697 DUI arrests
- > 550 Other arrests



Concerns

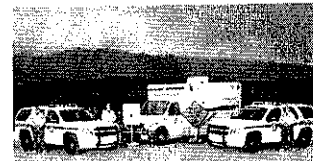
- > Traffic Jams and Delays- the goal of the checkpoint is to be no more intrusive than a traffic signal (about 2.5 minutes).
- > PCSD average has been less than 30 seconds.
- > Fair, Firm application of DUI laws while deterring impaired driving and promoting safety on Pima County Roadways.



Item	Description	Count
1
2
3
4
5
6
7
8
9
10
11
12
13
14
15
16
17
18
19
20
21
22
23
24
25
26
27
28
29
30
31
32
33
34
35
36
37
38
39
40
41
42
43
44
45
46
47
48
49
50
51
52
53
54
55
56
57
58
59
60
61
62
63
64
65
66
67
68
69
70
71
72
73
74
75
76
77
78
79
80
81
82
83
84
85
86
87
88
89
90
91
92
93
94
95
96
97
98
99
100

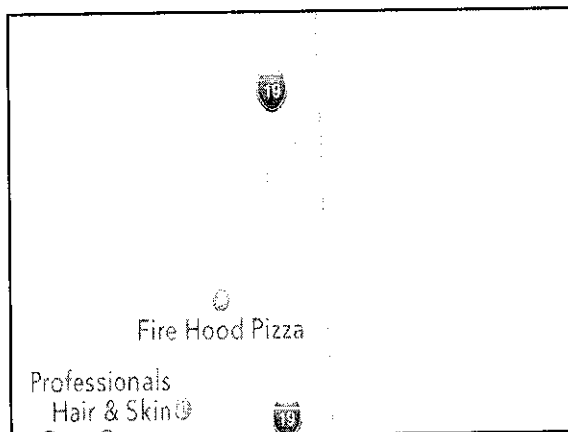
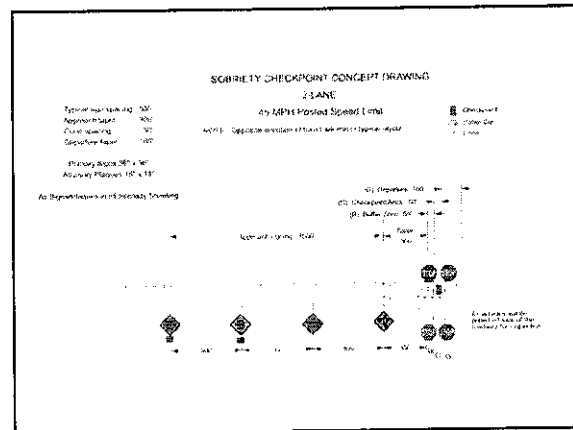
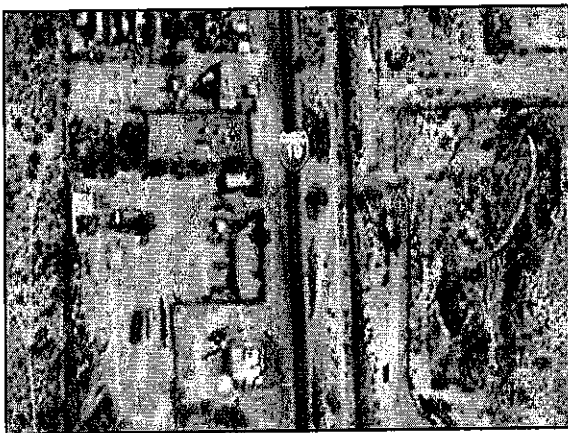
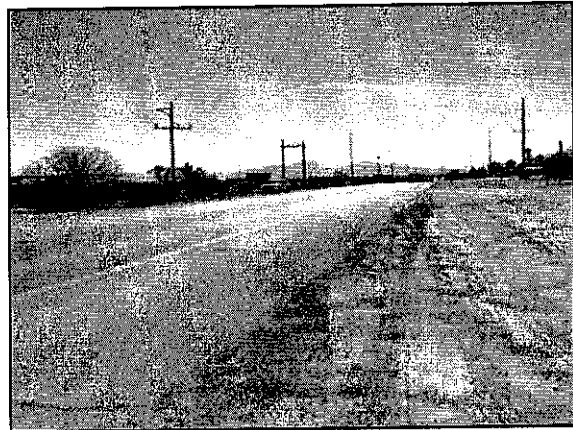
Checkpoint Location

- > Nogales Hwy. n/o Old Nogales Hwy.
- > Since 2013, in San Xavier, Beat 1, there has been:
 - 1 Fatal DUI Accidents
 - 20 Injury DUI wrecks
 - 46 Property DUI wrecks
 - 218 DUI's
 - 84 Liquor Law violations



Checkpoint Timeline

- 2000 hours Briefing @ C103
- 2030 hours Travel/Site setup
- 2100 hours Checkpoint Commences
- 2300 hours Checkpoint Ends
- 2330 hours Teardown/Saturation Patrol
- 0400 hours Secure (10-42)



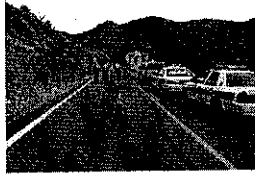
Logistics

- Parking - In approach areas, rear deck lights only.
- SFST area: in median contact area.
- Cars will be pulled outside coned off departure area.
- Restrooms: Circle K



Point Control

- Sheriff's Auxiliary Volunteers (SAV's)
- Victor w/lights
- Arizona Rangers
- DUI Van
- Lane closures and channeling
- Fully marked PCSD Patrol Vehicles



SAFETY!

- Safety is the most important aspect of the operation
- Reflective Vests must be worn at all times when in or near the roadway!



Assignments

- Checkpoint Commander: District and Force Commander notified
- Checkpoint Supervisor: Barkman
- DUI Van/Phlebotomist: J. Rodriguez
- Sign Placement: C. Rodriguez, Velasco, Senne, Copp, Dixon
- Checkpoint Set-up: Roher
- Cones: Enderle, Murray, J. Rodriguez, Bernstein, Mosman, Jones, Greenman, Bret, Hartenstein, Zacarias
- Security: Pre – Deputy Avila/ Post – Deputy Roher



Communications

- Radio Frequency:
 - West 1
- Frequency will be monitored by PCSD dispatcher
- Use proper radio 10 code and supplement code.

Nogales Hwy. n/o Old Nogales Hwy.

Northbound Sgt. Bustamante

Contact

- Deputy Senne
- Deputy Dixon
- Deputy Bernstein
- Deputy Mosman
- Deputy Jones
- Deputy J. Rodriguez (as needed)
- Officer Art Zacarias

Chase

- Deputy Avila
- Deputy Velasco

Southbound Sgt. Manoles

Contact

- Deputy Enderle
- Deputy C. Rodriguez
- Deputy Copp
- Deputy Greenman
- Deputy Bret
- Deputy Hartenstein

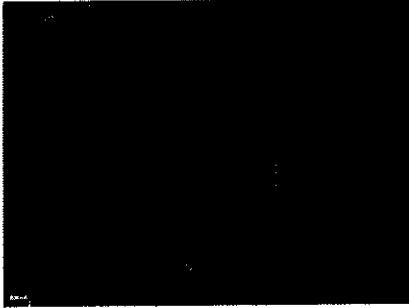
Chase

- Deputy Roher
- Deputy Murray

SOBRIETY CHECKPOINT BRIEFING

- The purpose of these checkpoints is to aid the Pima County Sheriff's Department in detecting and deterring impaired drivers while causing minimal inconvenience and detention to the motoring public. The real value of its ability to deter the impaired driver is a checkpoint where no impaired drivers are detected.

SOBRIETY CHECKPOINT BRIEFING



- The location chosen for the checkpoint was based in part from statistical data involving DUI incidents in the surrounding area.
- The above Pin Map shows a recent history of DUI/alcohol incidents (UCR Code 21.01 - 22.04) in the area of the Checkpoint location

SOBRIETY CHECKPOINT BRIEFING



- Deputies shall explain the purpose of the checkpoint upon approaching a vehicle. Each motorist should be advised that he/she has been stopped at a sobriety checkpoint established to identify impaired drivers.

SOBRIETY CHECKPOINT BRIEFING

Supervisors assigned to the Sobriety Checkpoint operation will supervise the on-scene enforcement activities. Supervisors will remain at the location for the duration of the operation.



SOBRIETY CHECKPOINT BRIEFING

- The following question/statement shall be made upon approaching a vehicle:
- "Good evening, this is a Sobriety Checkpoint aimed at deterring impaired driving. Have you consumed any alcohol and/or drugs today?"

SOBRIETY CHECKPOINT BRIEFING

- Traffic control devices and personnel will be placed in conformance with the site map approved by Pima County Department of Transportation or Pima County Sheriff Department Sobriety checkpoint guidelines.



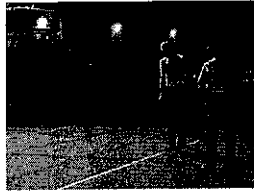
SOBRIETY CHECKPOINT BRIEFING



- If the answer is no and there is no compelling reason to detain the vehicle, hand the driver a pamphlet and state, "This brochure explains the Sobriety Checkpoint program. Please look it over at your leisure."

SOBRIETY CHECKPOINT BRIEFING

- If the answer is **yes**, ask how much and when. At this point, depending on the answers and other circumstances, the attending Deputy should consider if further investigation is warranted. If so, direct the driver to the nearby staging area to continue the investigation. If not, give the driver a brochure and advise them they are free to go.



SOBRIETY CHECKPOINT BRIEFING



- The use of artificial light for the inspection of the vehicle's interior and its occupants is legally permissible.

SOBRIETY CHECKPOINT BRIEFING

- If the driver is evaluated and is **not impaired**, provide a pamphlet and **escort** the driver to their vehicle and help them pull into traffic, if necessary.



SOBRIETY CHECKPOINT BRIEFING

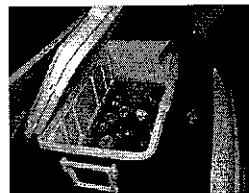


- Unless the Deputy observes evidence of impairment, or there is evidence of a more serious violation, the motorist should be allowed to proceed on their way.

SOBRIETY CHECKPOINT BRIEFING

- Contact Deputies shall visually inspect the driver for **red, watery bloodshot eyes; abnormal complexion, vomit, urine or excrement on clothing; or other telltale signs of possible intoxication/impairment.**
- Inspection of the passengers, interior and exterior of the vehicle will also be made. Deputies should observe the driver's breath and look for **plain view narcotics, narcotic paraphernalia, and alcoholic beverage containers**

SOBRIETY CHECKPOINT BRIEFING



- A search of the vehicle should be conducted to inventory prior to being towed.

SOBRIETY CHECKPOINT BRIEFING



- A motorist who chooses to avoid the checkpoint should be allowed to proceed unless traffic violations are observed or probable cause exists to take other action. The mere act of avoiding a checkpoint will not constitute grounds for a stop.

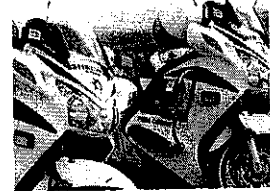
SOBRIETY CHECKPOINT BRIEFING

- An Incident Report will be completed for each Sobriety Checkpoint deployment, including:
 - number of vehicles stopped
 - number of DUI arrests
 - other violations, which are observed and charged.

- Force Commander Summary will be completed

- Media has been notified

- Public notification via twitter, Facebook and PCSD Website



SOBRIETY CHECKPOINT BRIEFING

- Drivers who refuse to roll down their windows in order to avoid contact with a law enforcement officer will be waived through and may be followed by an observation car unless reasonable suspicion/ probable cause exists to further the investigation.

Contact Officer Duties

- Make contact with vehicle operators
- Initiate investigations
- Follow through and complete investigation



SOBRIETY CHECKPOINT BRIEFING

- A systematic approach to stopping vehicles will be established. Either all vehicles will be stopped or a method will be utilized that does not involve random stops at the Deputy's discretion.
- It will be the on-scene supervisor's responsibility to make a change in the systematic sequence of vehicles stopped if the traffic pattern necessitates a change.

Equipment and Logistics:

- Removal of vehicles (AZ Rangers)
- FST's (Median area)
- PBT's (Checkpoint table)
- DRE
- Spanish Speaker
- Camera (Individual Deputies)

Chase

- Observe vehicles entering traffic pattern
- Watch for turnarounds and stop should you find reasonable suspicion.
- Watch for drivers and passengers to swap
- Watch for littering
- Stop vehicles when advised by checkpoint personnel

Statistics

- Contact personnel: At the end of the checkpoint operational period, report number of FST's administered, DUI arrests and other arrests.
- Chase vehicle personnel: Report all activity on stat summary for remainder of shift.





Department of Transportation

MEMORANDUM

Department of Transportation

DATE: 9/2/05

TO: Karl Woolridge, Sergeant, Pima County Sheriff's Dept.

FROM: Albert Letzkus, Traffic Engineering Division Manager, PCDOT *Letzkus*

SUBJECT: Proposed Signing Plans for DWI Checkpoints

Enclosed with this memo are proposed signing plans for DWI checkpoints on County roads. They include plans for two-lane roads and for divided multi-lane roads. As I understand it, the signs for these checkpoints have been made by TED and delivered to you. Let me know when and where you will need the traffic cones, and I will coordinate their delivery to you with the Ops division.

If you have any questions about the proposed plans, feel free to call me at work at 740-5929, or on my cell phone at 850-3982.

Thank you.




Enclosures

cc Tracy Shaw
Kurt Brei
Dave Cummings

SOBRIETY CHECKPOINT CONCEPT DRAWING

2-LANE

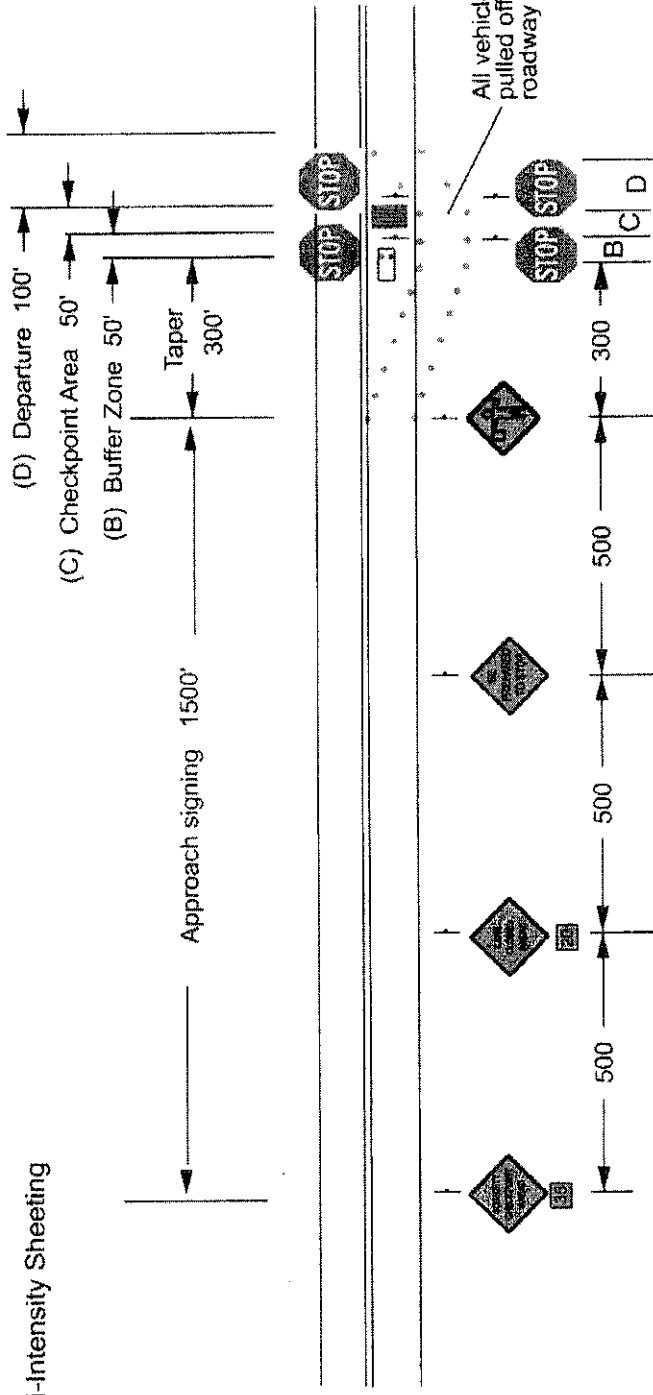
- Typical sign spacing 500'
- Approach taper 300'
- Cone spacing 50'
- Departure taper 100'

-  Checkpoint
-  Patrol Car
-  Cone

45 MPH Posted Speed Limit

NOTE: Opposite direction of travel will mirror typical layout

Primary Signs 36" x 36"
 Advisory Plaques 18" x 18"



All Signs/Plaques in Hi-Intensity Sheeting

Sobriety Checkpoint Supervisor Checklist

- Select and scout location
- Site measurements for signing
- Operations Plan
- Positioning/ Scheduling/ Manpower documents
- Notice memorandums to participating personnel
- Communications
 - Dispatcher if needed
- Approval from Special Ops Commander
 - Approval memorandum
 - Ops plan
 - Site diagram
 - Signing plan
 - Briefing documents
 - Sobriety Checkpoint guidelines
 - Procedures checklist
 - **Note:** *The above documents are to be submitted to Records under the master case number.*
- Notify PIO
 - Press release
- Arrange SAV's
 - Command Center
 - Command Post Bravo
 - Command Post Victor
 - Other _____
- Supplies:
 - Questionnaires
 - Procedures checklist
 - PBT's
 - Signing
 - Cones

Sobriety Checkpoint Administrative Deputy Checklist

- Call Number
- Distribute/ Collect/ Turn in checklists under the case number
- Statistic sheet
- Supplies
 - 20 Blood kits
 - 6 PBT's
 - Mouthpieces
 - 2 Tables
 - Masking tape
 - Forms
 - Questionnaires
- Signing
 - Four Lane Road- Large Trailer
 - 8 stop signs
 - 4 Sobriety Checkpoint Ahead/ 35 MPH signs
 - 4 Left Lane Closed signs
 - 4 Lane Ends Merge Right signs
 - 4 Be Prepared to Stop signs
 - 4 Flagman Signs
 - Two Lane Road- Small trailer
 - 6 stop signs
 - 2 Sobriety Checkpoint Ahead/ 35 MPH signs
 - 2 Lane Closed Ahead/ 20 MPH signs
 - 2 Be Prepared to Stop signs
 - 2 Flagman Signs
- Force Commander Summary
 - Number of vehicles stopped
 - Number of DUI arrests
 - FST's Administered
 - Other Violations
- Case report
 - Number of vehicles stopped
 - Number of DUI arrests
 - FST's Administered
 - Other Violations

Pima County Sheriff's Department Sobriety Checkpoint Guidelines

I. Purpose

The purpose of this policy is to provide guidelines for the physical construction and operation of a sobriety checkpoint. The goal of the checkpoint will be maximizing its deterrent effect by increasing the perceived risk of apprehension of motorists who would operate a motor vehicle while impaired by alcohol or drugs.

II Policy

- A. It shall be the policy of the Pima County Sheriff's Department to implement a sobriety checkpoint program. The sobriety checkpoint program will be used as a part of the Pima County Sheriff's Department's ongoing comprehensive traffic enforcement efforts. To standardize this program, the following set of written guidelines has been developed governing the operation of sobriety checkpoints within the Pima County Sheriff's Department's jurisdiction.
- B. To implement this policy, the Special Operations Commander will ensure that the Traffic Unit or DUI Unit Supervisor complies with the following restrictions:
1. Satisfy the legal requirements for sobriety checkpoints.
 2. Conduct sobriety checkpoints with a minimum amount of intrusion or inconvenience to the motoring public.
 3. Assure the safety of the general public and of the participating law enforcement officers.
 4. Objectively select a sobriety checkpoint site based on relevant data.
 5. Provide for public information and education to maximize the deterrent effect and heighten awareness of the impaired driver problem.
 6. Provide for a systematic procedure for both data collection and post checkpoint reporting to insure consistency with checkpoint guidelines.
 7. Select participating law enforcement officers based on relevant training, skills, and experience.
 8. Brief participating deputies on operational guidelines prior to the

beginning of these checkpoints.

II Guidelines

A. General

1. Sobriety checkpoints will not be conducted without the approval of the Special Operations Commander or his designee.
2. A statistical summary and justification for establishing a sobriety checkpoint shall be presented to the Special Operations Commander for review and approval.
3. The selection of the date, time, and location of the sobriety checkpoint will be made by the Traffic or DUI Supervisor.
4. The Traffic or DUI Supervisor shall give no less than one day notice to the Press Information Officer Supervisor for dissemination to the general public. This announcement will not specify the location of the checkpoint but rather the Pima County Sheriff's Department's use of sobriety checkpoints for impaired driver deterrence.
5. The Traffic or DUI Supervisor shall conduct a briefing for all personnel assigned to operate the sobriety checkpoint. The Traffic or DUI Supervisor shall provide such personnel with required guidelines and procedures as well as answer questions concerning the operation.

B. Physical Construction of Sobriety Checkpoints

1. All sobriety checkpoints established by the Pima County Sheriff's Department shall strive for consistency with accepted procedures regarding the use of warning signs, barricades, traffic cones, warning lights, and other safety equipment and/ or warning devices that may be required.
2. Checkpoints will be categorized as follows:
 - A. **Large scale checkpoints** will be used on high volume, arterial type roadways and thoroughfares. These checkpoints will require a site plan with approval from the Pima County Department of Transportation as to the physical location and layout of the operation

- B. **Small scale checkpoints** will be used on smaller, rural type roadways. These operations will typically be manned by fewer personnel and constructed by Pima County Sheriff's Department personnel. The intent of these checkpoints is to be rapidly deployed and capable of tear down and relocation on short notice. These small scale checkpoints will generally be supported by a saturation type DUI patrol in the surrounding area.
 - C. **Phantom checkpoints** will be used on either arterial roadways or on lower volume traffic ways. The intent of these set ups is to give the motorists the impression that a checkpoint is either being prepared or was just completed. The appropriate signing and an emergency vehicle will be deployed but the checkpoint will not actually stop vehicles. Generally, a saturation patrol will be deployed in the vicinity of these checkpoints.
- 3. For the safety of law enforcement officers and the motoring public, vehicles will be, where possible, directed by means of warning signs, lights, traffic cones, or other safety equipment into a single traffic lane.
 - 4. All vehicles shall be required to stop at the checkpoint except as outlined in this procedure. Portable stop signs in addition to the directions of a uniformed law enforcement officer shall be utilized for this purpose.
 - A. At large scale checkpoints, a staggered stop of all vehicles shall be employed. All vehicles shall be motioned to a stop approximately 30 to 50 feet from the contact law enforcement officer. As the contact law enforcement officer concludes speaking with the operator of a vehicle, the next vehicle waiting shall be signaled to pull forward and then stop in the immediate vicinity of the contact law enforcement officer.
 - B. At small scale checkpoints, operators will be directed to stop by the law enforcement officer making contact with each vehicle.
 - 5. Adequate off street parking for follow up investigation (field sobriety testing and screening) shall be available in the immediate vicinity of the sobriety checkpoint.
 - 6. The Traffic or DUI Supervisor shall obtain permission from the owner

or agent of any private property or parking area used for this police purpose.

C. Operator Contact at Sobriety Checkpoints

1. All contact law enforcement officers shall be uniformed so as to assure the public that the sobriety checkpoint is a legitimate governmental operation.
2. All contact law enforcement officers shall wear a reflective traffic safety vest.
3. Only those law enforcement officers with DUI training shall participate as contact law enforcement officers at sobriety checkpoints.
4. The contact law enforcement officer shall utilize a statement/ question similar to the following upon contact with the driver of a stopped vehicle:

A Good evening. This is a sobriety checkpoint aimed at deterring impaired driving. Have you consumed any alcohol or drugs today? @

If the driver's answer is no and there is no other compelling reason to detain the vehicle, the contact law enforcement officer shall permit the vehicle to proceed.

5. During the conversation with the driver, the contact law enforcement officer will establish if reasonable suspicion exists to warrant further investigation.
6. The contact law enforcement officer shall pay particular attention to any symptoms or indicators of impairment to include but not limited to
 - A. Ability to follow directions as to the physical layout of the checkpoint as well as those given by checkpoint personnel.
 - B. The driver's speech, coordination, appearance, eyes, and any odor of intoxicants or other contraband.

- C. An odor of intoxicants warrants asking the driver if he or she has been drinking.
 - D. Irrational or erratic behavior consistent with an impaired subject.
7. Contact law enforcement officers shall utilize a flashlight or other form of artificial light to illuminate the driver, occupants, and interior of all vehicles for the purpose of their safety as well as to check the condition of the driver and monitor the actions of the occupants in the vehicle. If during this initial contact the deputy establishes a reasonable suspicion for further investigation, the operator will be escorted to an adjacent area for further screening.
 8. If such reasonable suspicion does not exist, the driver will be allowed to proceed.

D. Impaired Driver Screening

1. Suspected impaired drivers shall be processed in accordance with Pima County Sheriff's Department procedures related to DUI investigations. Law enforcement Officers participating in the operation shall administer such tests as practical and in accordance with their training in DUI investigation.
2. The law enforcement officer making initial contact with the operator shall remain with that driver throughout the remainder of the investigation.
3. If an operator displays impairment inconsistent with their blood alcohol level, a Drug Recognition Expert should be used to evaluate the operator.
4. If the law enforcement officer determines through the screening process that there is not probable cause to make an arrest, the operator shall be released.

E. Supervisor Responsibilities

1. A supervisor shall be present at the checkpoint at all times.
2. If the on scene supervisor at the checkpoint determines that a hazard is being created by the backup of stopped vehicles, he may suspend the checkpoint for a period of time in order to relieve the traffic congestion.
3. If there are an insufficient number of law enforcement officers to properly conduct the checkpoint at any given time, the on scene supervisor may suspend the checkpoint until such time as staffing becomes available.
4. Documentation shall be maintained regarding the length of time the checkpoint was suspended and the reason for the suspension.
5. The supervisor shall ensure that the following statistics are maintained:
 - A. Number of vehicles passing through the checkpoint
 - B. The number of operators field tested
 - C. The number of operators arrested
 - D. The charges brought against each arrested driver
6. A telephone shall be made available to facilitate the release of arrestees to responsible parties or to obtain alternate transportation.
7. Transportation shall be available to handle any arrestees who cannot be field released.
8. The Traffic or DUI Supervisor shall insure that a detailed report is completed with the statistical data from each checkpoint.
9. The Traffic or DUI Supervisor shall insure that an Incident Resume is completed documenting the DUI checkpoint and its results.

F. Avoidance of Checkpoint

1. Vehicles that make a U-turn or otherwise maneuver to avoid the checkpoint may be followed by an observation car. The law enforcement officer may make a stop if he has reasonable suspicion. If no reasonable suspicion exists, the observation car will return to the checkpoint without stopping the vehicle.
2. Drivers who refuse to roll down their windows in order to avoid contact with a law enforcement officer will be waived through and may be followed by an observation car. (The same procedure as in paragraph 1 will apply.)
3. Vehicles that refuse to stop within the checkpoint area may be stopped and cited for the appropriate violation(s). Such drivers shall also be examined for signs and symptoms of impairment.
4. Drivers who refuse to participate or cooperate for any reason shall not be detained solely for that reason. (The procedures outlined in paragraph 2 shall be followed.)

revised

May 19, 2006
Sgt. D. Theel #860